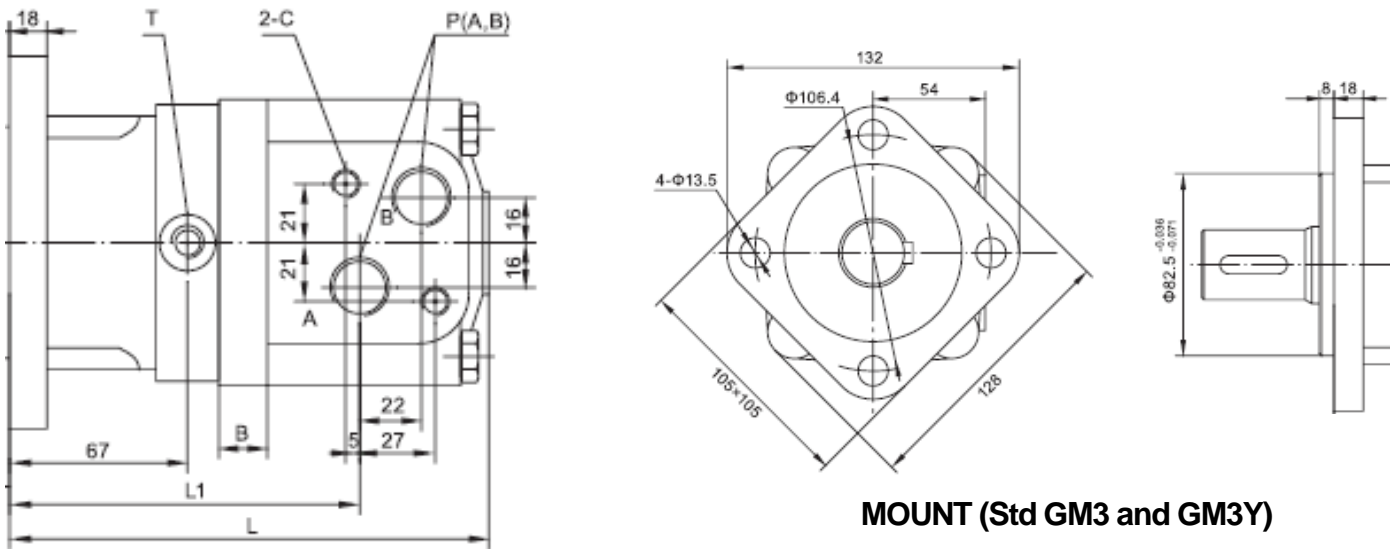
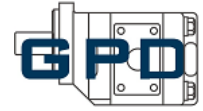


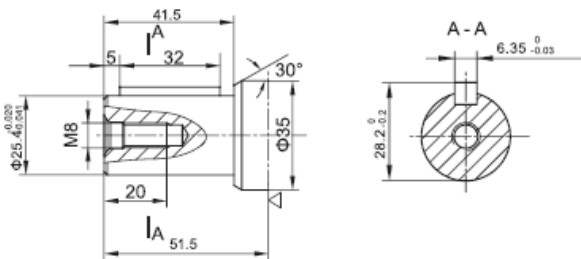
GM3 / GM3Y GEROLER MOTORS



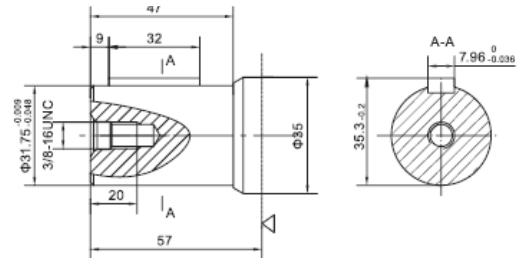
	Disp(cc/rev)	L	L1	2-C	B	P(BSPP)	P(UNF)	T(BSPP)	T(UNF)
GM3-80	80	167	124	M10	11	G1/2"	7/8"-14	G1/4"	7/16"-20
GM3-100	100	170.5	127.5	M10	14.5	G1/2"	7/8"-14	G1/4"	7/16"-20
GM3Y-125	125	175	132	M10	19	G1/2"	7/8"-14	G1/4"	7/16"-20
GM3Y-160	160	181	138	M10	25	G1/2"	7/8"-14	G1/4"	7/16"-20
GM3Y-200	200	188	145	M10	32	G1/2"	7/8"-14	G1/4"	7/16"-20
GM3Y-250	250	197	154	M10	41	G1/2"	7/8"-14	G1/4"	7/16"-20
GM3Y-315	315	209	166	M10	53	G1/2"	7/8"-14	G1/4"	7/16"-20
GM3Y-400	400	223	180	M10	67	G1/2"	7/8"-14	G1/4"	7/16"-20

SHAFT OPTIONS

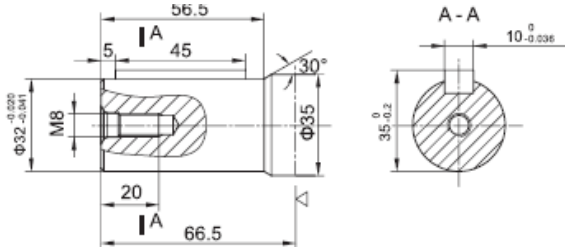
25.4mm Cylindrical shaft, **GM3Y ONLY**



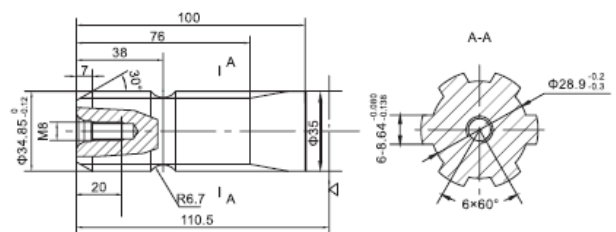
31.75mm Cylindrical shaft, **GM3 and GM3Y**



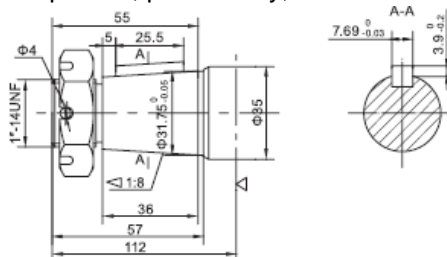
32mm Cylindrical shaft, **GM3Y ONLY**



34.85mm Splined shaft 6T, **GM3Y ONLY**



Taper 1:8, parallel key, **GM3Y ONLY**



Taper 1:10, parallel key, **GM3Y ONLY**

