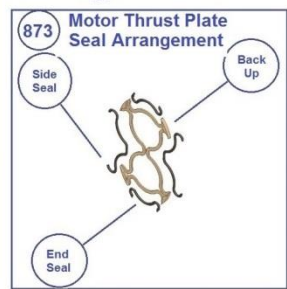
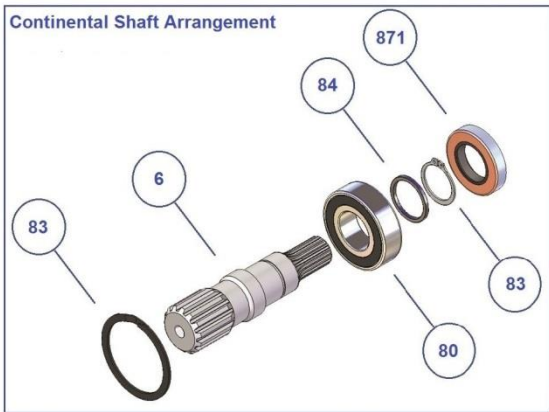
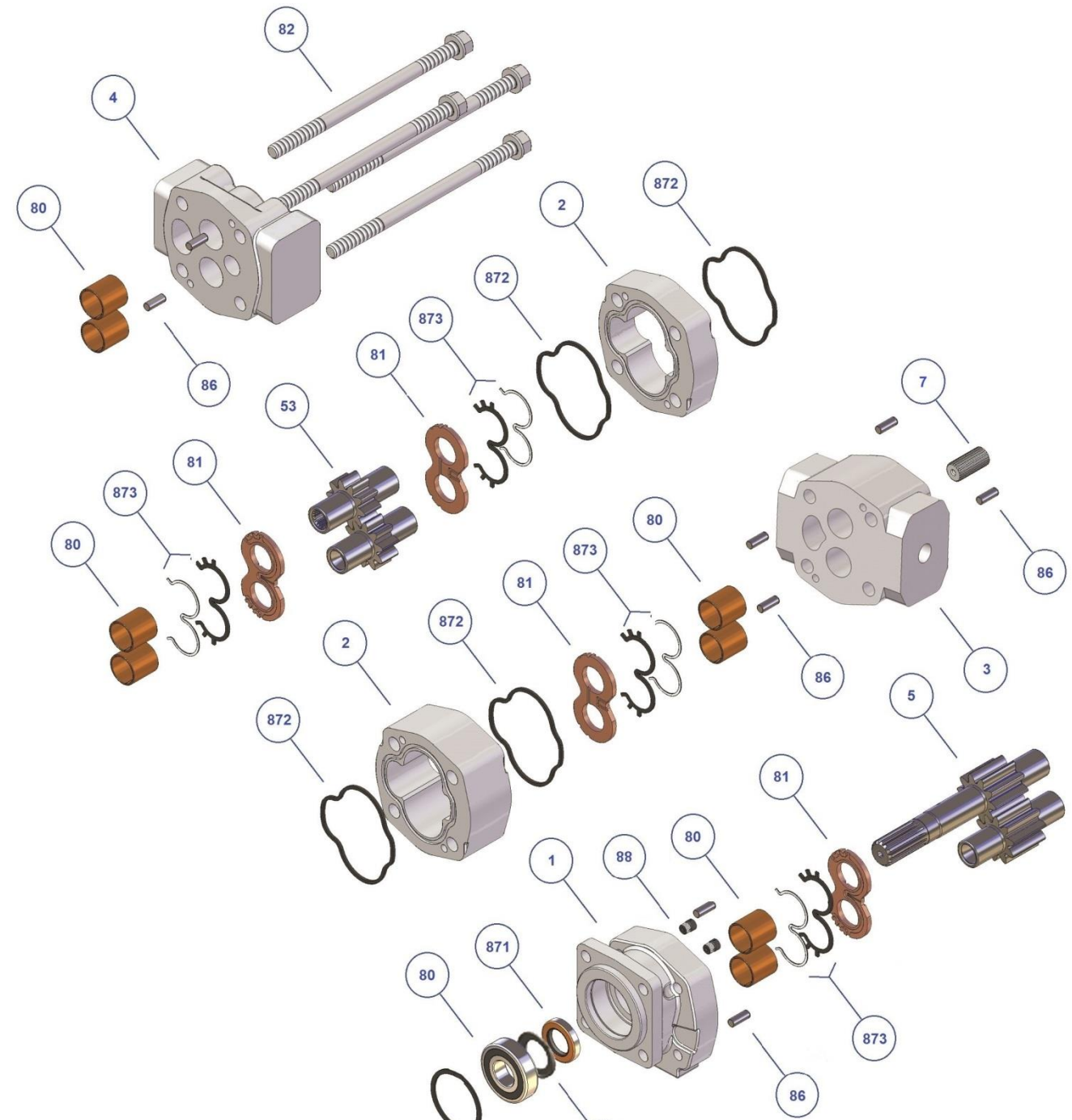


Bushing Series

215 / 230 / 250 / 265



PART TYPE	SERIES			
	215	230	250	265
(1)	SHAFT END COVERS			
2 BOLT 3.25" SAE A	215-1221-20	230-1221-10		
2 BOLT 3.25" SAE A WITH S/RETAINER				
2 BOLT 3.25" SAE A MOTOR	215-1222-20			
2 BOLT 4" SAE B	215-1231-20	230-1231-10	250-1231-10	265-1231-10
2 BOLT 4" SAE B MOTOR	215-1232-20			265-1232-10
2 BOLT 4" SAE B SHORT		230-1231-20		
2 BOLT 5" SAE C		230-1241-10	250-1241-10	265-1241-10
2 BOLT 5" SAE C MOTOR				265-1242-10
4 BOLT 4" SAE B		230-1331-10	250-1331-10	265-1331-10
4 BOLT 4" SAE B MOTOR				265-1332-10
4 BOLT 5" SAE C		230-1341-10	250-1341-10	265-1341-10
4 BOLT 5" SAE C MOTOR				265-1342-10
4 BOLT GROUP 3 EURO	215-1381-20			
2/4 BOLT 4" SAE B			250-1531-10	
2/4 BOLT 4" SAE B SHORT				
2/4 BOLT 5" SAE C			250-1541-10	
PAD MOUNT FAN MOTOR	215-1102-20			
(2)	HOUSINGS			
PUMP	215-21??-00	230-21??-00	250-21??-00	265-21??-00
MOTOR	215-22??-00	230-22??-00	250-22??-00	265-22??-00
REFER TO DATA SHEET BELOW THEN SELECT AND SUBSTITUTE ABOVE ?? WITH CORRECT DASH SIZE (CODE)				
(3)	BEARING CARRIERS			
1 OUTLET	215-3100-00	230-3100-00	250-3100-00	265-3100-00
2 OUTLET	215-3200-00	230-3200-00	250-3200-00	265-3200-00
MOTOR	215-3400-00	230-3110-00	250-3400-00	265-3400-00
3" SUCTION				265-3300-00
(4)	PORT END COVERS			
PORTED	215-4100-00	230-4200-00	250-4200-00	265-4200-00
PORTED 4 PORT	215-4200-00	230-4210-00		
TANDEM	215-4300-00	230-4300-00	250-4300-00	265-4300-00
MOTOR	215-4400-00	230-4400-00	250-4400-00	265-4400-00
MOTOR TANDEM				265-4410-00
FAN MOTOR	215-4500-00			
PIGGYBACK CW		230-4621-10	250-4622-10	265-4625-10
PIGGYBACK CCW		230-4621-20	250-4622-20	265-4625-20
ADD A PUMP 2 BOLT A CW			250-4737-10	265-4737-10
ADD A PUMP 2 BOLT A CCW			250-4737-20	265-4737-20
ADD A PUMP 2 BOLT B CW			250-4738-10	265-4738-10
ADD A PUMP 2 BOLT B CCW			250-4738-20	265-4738-20
(5)	SOLID SHAFT GEAR SETS			
7/8" KEY SAE B		230-51??-12		
7/8" KEY SHORT SAE B	215-52??-12			
1" KEY SAE BB		230-51??-13	250-51??-13	
1 1/8" KEY (JCB)		230-51??-17		
1 1/4" KEY SAE C			250-51??-15	265-51??-15
9 SPLINE 5/8" SHORT SAE A	215-52??-20			
11 SPLINE	215-52??-81			
13 SPLINE 7/8" SAE B		230-51??-32	250-51??-32	
13 SPLINE 7/8" SHORT SAE B	215-52??-32	230-52??-32		
14 SPLINE 1 1/4" SAE C			250-51??-45	265-51??-45
14 SPLINE (CLARK)				
15 SPLINE 1" SAE BB		230-51??-53	250-51??-53	
17 SPLINE 1 1/8" (CASE)			250-5113-84	
TAPER 15/16" with 7/8" UNF thread		230-51??-77		
TAPER 1:8 (GROUP 3)	215-52??-99			
REFER TO DATA SHEET BELOW THEN SELECT AND SUBSTITUTE ABOVE ?? WITH CORRECT DASH SIZE (CODE)				
(53)	LOOSE GEAR SETS			
STANDARD	215-53??-00	230-53??-00	250-53??-00	265-53??-00
REFER TO DATA SHEET BELOW THEN SELECT AND SUBSTITUTE ABOVE ?? WITH CORRECT DASH SIZE (CODE)				

(6)	CONTINENTAL SHAFTS			
7/8" KEY		230-6100-12		
1" KEY	215-6100-13	230-6100-13		
1 1/8" KEY				
1 1/4" KEY		230-6100-15	250-6100-15	
1 1/4" KEY LONG			250-6300-15	
6 SPLINE 1"		230-6400-03		
6 SPLINE 1 1/4"		230-6100-05		
13 SPLINE 7/8"		230-6100-32		
14 SPLINE 1 1/4"		230-6100-45	250-6100-45	
15 SPLINE 1"			250-6100-53	
17 SPLINE KOMATSU				265-6400-87
(7)	CONNECTING SHAFTS			
STANDARD	215-7000-00	230-7000-00	250-7000-00	265-7000-00
PIGGYBACK		230-7100-20	250-7100-40	265-7100-80
ADD A PUMP TO 9 SPLINE			250-7210-00	265-7210-00
ADD A PUMP TO 13 SPLINE			250-7220-00	265-7220-00
ADD A PUMP TO 15SPLINE				265-7240-00
(80)	BEARINGS/BUSHES			
BUSHES	215-8000-00	230-8000-00	250-8000-00	265-8000-00
SHAFT BALL BEARING	215-8020-00	131-8020-00	151-8020-00	176-8020-00
ADD A PUMP			250-8021-00	
(81)	THRUST PLATES			
PUMP	215-8140-00	230-8140-00	250-8140-00	265-8140-00
MOTOR	215-8130-00	230-8130-00	250-8130-00	265-8130-00
(82)	FASTENERS			
BOLTS	215-8211-??	XXX-8212-??	XXX-8212-??	XXX-8212-??
STUDS 06"-11" EXTENDED THREAD ON ONE SIDE	215-8221-01	XXX-8222-01	XXX-8222-01	XXX-8222-01
STUDS 11"-16" EXTENDED THREAD ON ONE SIDE	215-8221-02	XXX-8222-02	XXX-8222-02	XXX-8222-02
STUDS 16"-21" EXTENDED THREAD ON ONE SIDE	215-8221-03	XXX-8222-03	XXX-8222-03	XXX-8222-03
STUDS 21"-26" EXTENDED THREAD ON ONE SIDE	215-8221-04	XXX-8222-04	XXX-8222-04	XXX-8222-04
THREADED ROD PER METER		XXX-8222-00	XXX-8222-00	XXX-8222-00
NUTS	215-8231-00	XXX-8230-00	XXX-8230-00	XXX-8230-00
WASHERS	215-8241-00	XXX-8242-00	XXX-8242-00	XXX-8242-00
WASHERS 265 MOTOR				265-8243-00
(83)	SNAP RINGS/CIRCLIPS			
SHAFT		XXX-8320-00	151-8320-00	176-8320-00
SHAFT END COVER	215-8310-00	XXX-8310-00	151-8310-00	176-8310-00
ADD A PUMP			XXX-8340-00	XXX-8340-00
(84)	SPACERS			
SEAL SPACER	215-8410-00	131-8410-00	151-8410-00	265-8510-00
BEARING SPACER	215-8410-10	131-8420-02	151-8430-01	176-8430-00
SHAFT SPACER (CONTI)		131-8420-00		176-8420-00
(85)	RETAINERS			
SEAL RETAINER TELLTALE		230-8500-00	250-8500-00	265-8500-00
(86)	DOWELS			
STANDARD	215-8600-00	XXX-8600-00	XXX-8600-00	265-8600-00
MOTOR				265-8610-00
(871)	SHAFT SEALS			
PUMP SEAL STANDARD	215-8711-00	131-8711-00	151-8711-00	176-8711-00
MOTOR SEAL STANDARD	215-8713-00	131-8714-00	151-8713-00	176-8713-00
PUMP SEAL TELLTALE				
PUMP SEAL LOOSE SHAFT		131-8712-00		
MOTOR SEAL LOOSE SHAFT		131-8713-00		
PUMP SEAL VITON	215-8711-10	131-8720-10	151-8720-10	176-8720-10
(872)	BODY SEALS			
BODY SEALS	215-8720-00	131-8720-00	250-8720-00	265-8720-00
MOTOR BODY SEAL	215-8720-10			

(873)		THRUST PLATE SEALS			
PUMP CHANNEL SEAL	215-8731-20	230-8731-20	250-8731-20	265-8731-20	
PUMP CHANNEL SEAL BACKUP	215-8731-30	230-8731-30	250-8731-30	265-8731-30	
MOTOR SEAL BACKUP	215-8732-70	230-8732-70	250-8732-70	265-8732-70	
MOTOR END SEAL	215-8732-60	230-8732-60	250-8732-60	265-8732-60	
MOTOR SIDE SEAL	215-8732-40	230-8732-40	250-8732-40	265-8732-40	
(88)		SMALL PARTS			
PLUG DRAIN	XXX-8811-00	XXX-8811-00	XXX-8811-00	XXX-8811-00	
PLUG SHAFT END COVER	XXX-8810-00	XXX-8810-00	XXX-8810-00	XXX-8810-00	
CHECK VALVES	XXX-8820-00	XXX-8820-00	XXX-8820-00	XXX-8820-00	
(89)		KEYS			
7/8" SHAFT	XXX-8920-08				
1" SHAFT		XXX-8920-05	XXX-8920-05		
1 1/8" SHAFT					
1 1/4" SHAFT			XXX-8920-06	XXX-8920-06	
1:8 TAPER SHAFT (AEK)					
1:5 TAPER SHAFT (ATK)					

Pump Specifications

GP(M)215 Bushing	Gear Housing Width	0.88"(7/8")	1.13"(11/8")	1.38"(13/8")	1.63"(15/8")	1.88"(17/8")	2.13"(21/8")	2.38"(23/8")				
	cc/rev	10.00	15.00	20.00	25.00	30.00	35.00	40.00				
	Lpm (At 1000rpm)	10.00	15.00	20.00	25.00	30.00	35.00	40.00				
	cu in (cu in/rev)	0.61	0.92	1.22	1.53	1.84	2.15	2.44				
	US gpm (At 1000rpm)	4.23	6.37	8.51	10.65	12.76	14.90	17.04				
	Max Pressure(Bar)	240	240	240	240	220	200	170				
	Max Pressure(Psi)	3500	3500	3500	3500	3200	2900	2500				
	Max Speed (RPM)	3000	3000	3000	3000	3000	3000	3000				

GP(M)230 Bushing	Gear Housing Width	1.00"(1")	1.25"(11/4")	1.50"(11/2")	1.75"(13/4")	2.00"(2")	2.25"(21/4")	2.50"(21/2")				
	cc/rev	16.00	24.10	32.20	40.30	48.30	56.40	64.50				
	Lpm (At 1000rpm)	16.00	24.10	32.20	40.30	48.30	56.40	64.50				
	cu in (cu in/rev)	0.99	1.48	1.97	2.46	2.96	3.45	3.94				
	US gpm (At 1000rpm)	4.23	6.37	8.51	10.65	12.76	14.90	17.04				
	Max Pressure(Bar)	240	240	240	240	240	220	200				
	Max Pressure(Psi)	3500	3500	3500	3500	3500	3250	3000				
	Max Speed (RPM)	3000	3000	3000	3000	3000	3000	3000				

GP(M)250 Bushing	Gear Housing Width	1.00"(1")	1.25"(11/4")	1.50"(11/2")	1.75"(13/4")	2.00"(2")	2.25"(21/4")	2.50"(21/2")	2.75"(23/4")	3.00"(3")		
	cc/rev	20.80	31.20	41.70	52.10	62.60	73.00	83.50	94.00	104.40		
	Lpm (At 1000rpm)	20.80	31.20	41.70	52.10	62.60	73.00	83.50	94.00	104.40		
	cu in (cu in/rev)	1.28	1.91	2.55	3.19	3.82	4.46	5.10	5.74	6.38		
	US gpm (At 1000rpm)	5.50	8.24	11.02	13.76	16.54	19.29	22.06	24.84	27.58		
	Max Pressure(Bar)	240	240	240	240	240	220	200	190	170		
	Max Pressure(Psi)	3500	3500	3500	3500	3500	3250	3000	2750	2500		
	Max Speed (RPM)	2400	2400	2400	2400	2400	2400	2400	2400	2400		

GP(M)265 Bushing	Gear Housing Width		1.25"(11/4")	1.50"(11/2")	1.75"(13/4")	2.00"(2")	2.25"(21/4")	2.50"(21/2")	2.75"(23/4")	3.00"(3")		
	cc/rev		44.00	59.00	73.50	88.00	102.00	118.00	132.60	147.00		
	Lpm (At 1000rpm)		44.00	59.00	73.50	88.00	102.00	118.00	132.60	147.00		
	cu in (cu in/rev)		2.68	3.60	4.49	5.37	6.22	7.20	8.09	8.97		
	US gpm (At 1000rpm)		11.62	15.59	19.42	23.25	26.95	31.18	35.03	38.84		
	Max Pressure(Bar)		240	240	240	240	240	240	220	200		
	Max Pressure(Psi)		3500	3500	3500	3500	3500	3500	3250	3000		
	Max Speed (RPM)		2400	2400	2400	2400	2400	2400	2400	2400		

Useful Formulae	To Convert :						
		Cubic Inches (cu in)	Into	Cubic centimeters (cc)	Multiply By	16.39	
		US Gallons	Into	Cubic Inches (cu in)	Multiply By	2.31	
		US Gallons	Into	Cubic centimeters (cc)	Multiply By	3.785	
		Inches (in)	Into	Millimeters (mm)	Multiply By	25.4	
		Bar	Into	Pounds per Square Inch (psi)	Multiply By	14.5	